



Weekly Report on COVID-19

COVID-19 සතිපතා වාර්තාව | COVID-19 வார அறிக்கை

Issue 2020 : 7

This report is based on COVID 19 cases from last 14 days

Period: 2020. 12. 21 to 2021. 01. 03

Published: 2021. 01. 04

COVID 19 Situation since 1st of January 2020

	Case	Deaths
Sri Lanka	44,774	213

Source: www.epid.gov.lk : 2021. 01. 03 : 10.30 pm

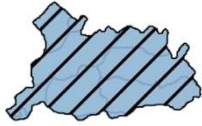
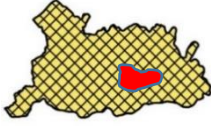
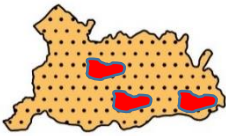

New cases reported in NWP

	Kurunegala	Puttlam	NWP
New cases reported from 2020. 12. 21	204	89	293
Total Cases from 2020. 10. 01	749	556	1,305
Total Deaths from 2020. 10. 01	06	03	09

COVID 19 Alert Related Definitions

❖ Proposed Regional Alert levels

(Localised adaptation based on Guideline number PA/DDGPHS ii/3/Covid/Gen/2020/ (Sub6) dated 03. 11. 2020 of Director General of Health Services) – See http://www.health.gov.lk/moh_final/english/

Proposed Regional Alert Level for MOH Division		
Number	Definition	Proposed functioning targeting minimizing the spread
Regional Alert Level 1 MOH Division	No active cases in the MOH Division	 Entire MOH division function as in national alert level. (Currently Alert 2-3)
Regional Alert Level 2 MOH Division	One GN Division (within or bordering) is having active case(s)	 - Designated GN area or a part of GN area to function as Level 4. - Other areas function as in national alert level (Currently Alert 2-3)
Regional Alert Level 3 MOH Division	More than one GN Division (within or bordering) are having active case(s).	 - Designated GN area or a part of GN area to function as Level 4. - Other areas function as level 3
Regional Alert Level 4 MOH Division	Community spread within the Division.	 Entire MOH division to function as level 4.

❖ **Active Cases:** Cases became positive within last 14 days

❖ **High Risk GN areas:** GN area with one or more active cases.

Active Cases: Cases became positive within last 14 days

High Risk GN areas: GN area with one or more active cases.

Distribution of OVID 19 Cases in Kurunegala District

MOH Division	GN Areas with active cases (Only the GN Divisions with active cases are shown)		
Name (& Total Cases)	Proposed Regional Alert Level of MOH division for next week	Name	Number of active cases
Alawwa (26)	Level 3	Alawwa South	1
		Bujjomuwa	1
		Damunupola	1
		Kebellavita	1
		Koholana	1
		Maldeniya	1
		Miriheliya	1
		Othara Kiruwampola	1
		Waduwwa	1
		Wedeniya	1
		Welikare	4
Wennoruwa West	1		
Ambanpola (14)	Level 2	Ambanpola South	1
Bamunakotuwa (10)	Level 3	Kedapath Vehera	1
		Mahakeliya	3
Bingiriya (16)	Level 3	Padiwela	2
		Wellarawa	1
Galgamuwa (17)	Level 2	Hunugallewa	1
Ganewatta (23)	Level 2	Malagamuwa	1
Giribawa (2)	Level 1	-	-
Ibbagamuwa (20)	Level 3	Daramitipola	2
		Karandagolla	1
		Periya Kadunelawa	1
		Puswellegama	1
		Udawela	1
		Wadupola	1
Katupotha (21)	Level 1	-	-
Kuliyapitiya (90)	Level 3	Diyadora Ihala Watta	1
		Inguruwatta	4
		Narangalla	1
		Wadugedara	1
Kurunegala (53)	Level 3	Akaragana North	1
		Bamunugedara	1
		Malkaduwwa	2
		Malkaduwwa Colony South	3
Kobeigane (4)	Level 1	-	-

Active Cases: Cases became positive within last 14 days

High Risk GN areas: GN area with one or more active cases.

Kotawehera (2)	Level 1	-	-
Maho (11)	Level 2	Daladagama	1
Mallawapitiya (58)	Level 3	Hengawa	1
		Indulgoda	1
		Indulgodakanda	2
		Koralegedara	2
		Mallawapitiya	1
		Thorayaya	4
		Uyandana	1
Mawathagama (22)	Level 3	Bandaragalawatta	3
		Kotikapola	2
		Mawathagama	6
		Mawathagama West	2
		Pahamuddana	1
MC Kurunegala (61)	Level 3	Kurunegala Town - Norh East	3
		Kurunegala Town - South	2
		Theliyagonna	1
Maspotha (1)	Level 1	-	-
Narammala (25)	Level 3	Embalapola	1
		Kadahapola	2
		Maravita	1
		Narammala	3
Nikaweratiya (6)	Level 1	-	-
Panduwasnuwara East (5)	Level 2	Kanogama	1
Panduwasnuwara West (11)	Level 3	Konwewa	1
		Mandapola	1
Pannala (80)	Level 3	Bammanna	1
		Batapothe Ela	1
		Elabadagama North	1
		Eriyagolla	2
		Ihala Labbala	1
		Medirivila	1
		Mutugalayaya	3
		Siyambalawalana	2
		Thelambugamma	3
Wettewa	5		
Polgahawela (100)	Level 3	Bandawa	31
		Delgolla	3
		Galbadagama	1
		Gallenamulla	1
		Ganegoda North	1
		Godawela	3
		Gorokgahapotta	2
		Handugala	1
Imbulgoda	1		

Active Cases: Cases became positive within last 14 days

High Risk GN areas: GN area with one or more active cases.





		Kebilittawela	1
		Kolambalamulla	1
		Kotambule	1
		Lihinigiriya	2
		Madalagama	1
		Mahapitiya	4
		Mawathagama	1
		Meddalanda	1
		Morugama	1
		Nahakotamada	1
		Oruliyadda	6
		Polgahawela South	1
		Polpitiya North	2
		Potuhara West	1
		Rathmalgoda	3
		Serapees Watta	1
		Tenpana	1
		Wadakada	6
		Weligodapitiya	1
Polpithigama (10)	Level 2	Polgahanagoda	1
Rideegama (33)	Level 3	Eriyagolla	1
		Hadiramulla	1
		Kithulgolla	1
		Koswatta	1
		Niyangama	2
		Rambukandana	1
		Wewegedara	1
Udubaddawa (7)	Level 2	Gahalagaswala	1
Wariyapola (4)	Level 1	-	-
Weerambugedara (17)	Level 3	Godavita	2
		Piduruwella	1
		Ranjanagama	1
Total (Cumulative Total :749)			204

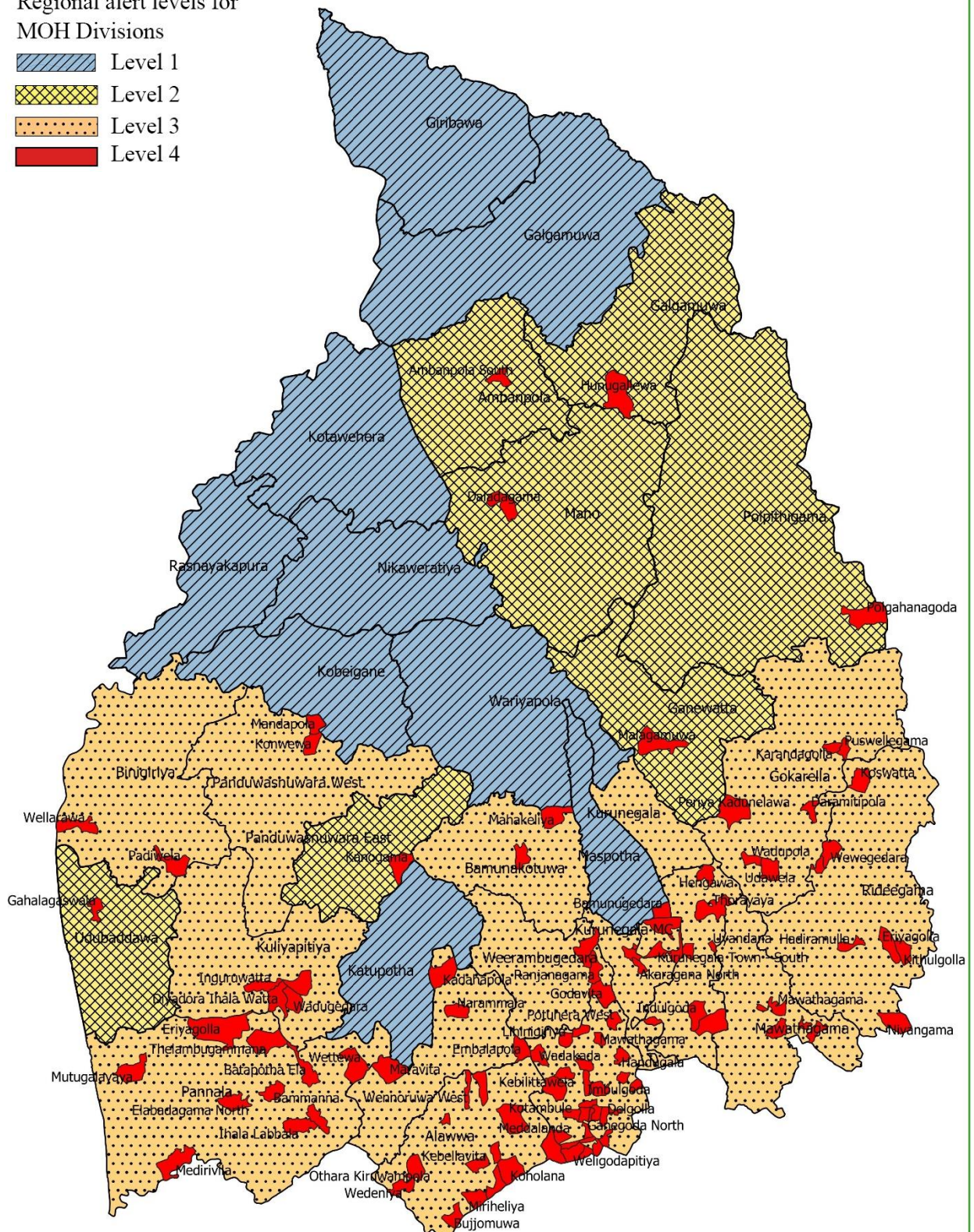
COVID-19 Risk Level Map in Kurunegala District

Regional Risk level assessment based on last 14 days reported cases

(Period 21st Dec 2020 to 03rd January 2021)

Regional alert levels for MOH Divisions

-  Level 1
-  Level 2
-  Level 3
-  Level 4



Update on 04th of January 2021, 4.30pm

Map Composer : Ranjan Vipulashantha, HIMU, NWP

A

High Risk GN areas: GN area with one or more active cases.

Distribution of COVID 19 Cases in Puttlam District

MOH Division		GN Areas with active cases (Only the GN Divisions with active cases are shown)	
Name (& Total Cases)	Proposed Regional Alert Level of MOH division for next week	Name	Number of active cases
Anamaduwa (3)	Level 1	-	-
Arachchikattuwa (64)	Level 2	Welipelessa	1
Chilaw (115)	Level 3	Munneshwaram	1
		Wattakkaliya	2
		Weralabada North	1
Dankotuwa (188)	Level 3	Dankotuwa South	6
		Dankotuwa West	1
		Haldanduwana North	22
		Haldanduwana West	6
		Jankurawela	1
		Lihiriyagama	1
		Pahala Bujjampola	1
Pahala Mohottimulla	2		
Kalpitiya (21)	Level 2	Narakkaliya	5
Karuwalagasswewa (2)	Level 1	-	-
Madampe (12)	Level 2	Irattakulama South	1
Mahakumbukkadawala ()	Level 1	-	-
Mahawewa (11)	Level 3	Iranavila West	1
		Thoduwawa North	1
Mundalama (12)	Level 3	Palasola	1
		Sinnapaduwa	5
		Tharakudivilluwa	1
Nattandiya (51)	Level 3	Ihala Mavila	1
		Kachchirawa	1
		Koswatta South	1
		Maningala	8
		Mudukatuwa South	1
		Pahala Kauneriya North	1
Pahala Thabbowa	2		
Nawagattegama (14)	Level 1	-	-
Pallama (12)	Level 3	Thammana	2
		Attavilluwa	2

Active Cases: Cases became positive within last 14 days

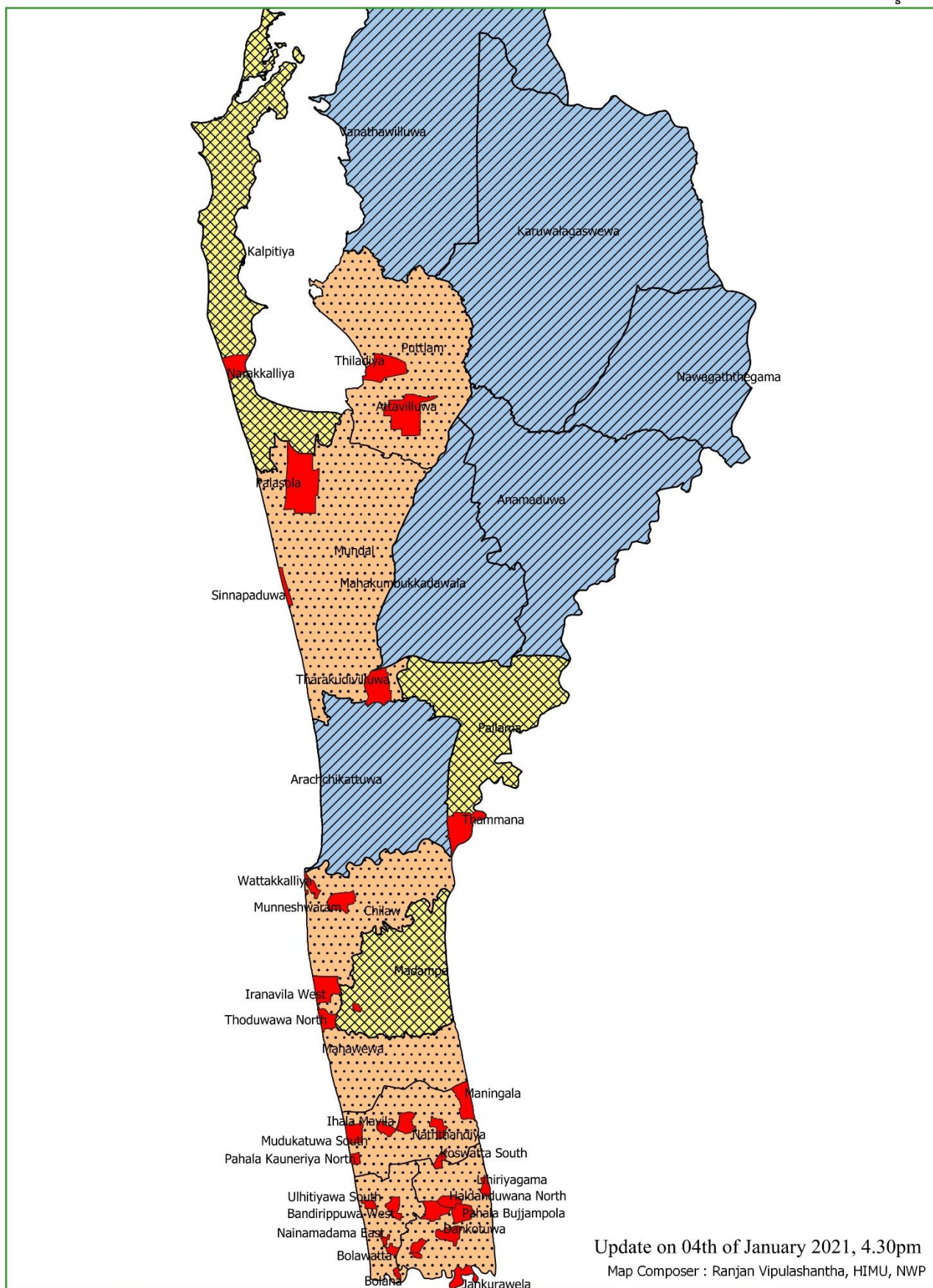
High Risk GN areas: GN area with one or more active cases.

		Thiladiya	1
Vanathvilluwa ()	Level 1	-	-
Wennappuwa (51)	Level 3	Bandirippuwa West	5
		Bolana	1
		Bolawatta	1
		Nainamadama East	1
		Ulhitiyawa South	2
Total (Cumulative Total :556)			89

COVID-19 Risk Level Map in Puttalam District

Regional Risk level assessment based on last 14 days reported cases

(Period 21st Dec 2020 to 03rd January 2021)



Active Cases: Cases became positive within last 14 days
High Risk GN areas: GN area with one or more active cases.

Distribution of Contacts under quarantine by MOH Divisions

In Kurunegala District (21. 12. 2020 – 03. 01. 2021)

SN	MOH Area	Total No Quarantined Since 2020. 10. 01	No of Contacts under quarantine
1	Alawwa	1,320	145
2	Ambanpola	229	6
3	Bingiriya	543	50
4	Galgamuwa	1,153	134
5	Ganewaththa	388	80
6	Giribawa	285	39
7	Ibbagamuwa	1,344	126
8	Katupotha	1,427	22
9	Kobeigane	445	25
10	Kotawehera	165	20
11	Kuliyapitiya	1,669	176
12	Kurunegala	643	89
13	Maho	366	48
14	Mallawapitiya	2,513	361
15	Mawathagama	1,786	128
16	MC Kurunegala	622	79
17	Narammala	1,422	102
18	Nikawaratiya	741	15
19	Panduwasnuwara-W	925	51
20	Panduwasnuwara-E	633	53
21	Pannala	3,803	463
22	Polgahawela	1,623	1,091
23	Polpithigama	1,876	46
24	Rideegama	1,224	290
25	Udubaddawa	1,097	135
26	Wariyapola	802	43
27	Weerambugedara	693	163
28	Rasnayakapura	115	19
29	Bamunakotuwa	341	10
	Total	30,193	4,009

Date of Data Source: 2021. 01. 04

Active Cases: Cases became positive within last 14 days

High Risk GN areas: GN area with one or more active cases.

Distribution of Contacts under quarantine by MOH Divisions

In Puttlam District (01. 01. 2021)

SN	MOH Area	Total No Quarantined Since 2020. 10. 01	No of Contacts under quarantine
1	Anamaduwa		17
2	Arachchikattuwa		44
3	Chilaw		121
4	Dankotuwa		222
5	Kalpitiya		27
6	Karuwalagaswewa		47
7	Madampe		73
8	Mahawewa		82
9	Mundel		161
10	Nattandiya		58
11	Pallama		24
12	Puttlam		150
13	Wennappuwa		98
	Total		1,124

Date of Data Source: 2021. 01. 04

COVID 19 Specific Investigations

PCR Activities

	Kurunegala		Puttlam		NWP
	Since 2020. 10. 01	Since 2020. 12. 21 to 03. 01. 2021	Since 2020. 10. 01 to 2021. 01. 02	Since 2020. 12. 27 to 02.01.2021	
PCR Sample Collected - At OPD	-	-	xx	75	xx
PCR Sample Collected - In-ward	1,589	49	xx	139	xx
PCR Sample Collected - Field	21,490	4,196	xx	268	xx
Total Sample Collected	23,079	4,245	5,228	482	28,307

Distribution of COVID 19 diagnosed patients in Healthcare Institutions

Treatment Centres and Intermediate Centres	Bed Capacity	Patient Number 2020. 12. 27 Midnight	Admission within Last Week (20/12/2020- 27/12/2020)
Kurunegala			
BH Galgamuwa	33	25	
DH Ambanpola	50	40	
Dambadeniya Intermediate Care Centre	300	243	
DH Narammala	60	53	
Giriulla Brandix			
Total	443	361	
Puttlam			
Bingiriya Intermediate Care Centre	550		
Iranawila Treatment Centre	141	111	
DH Dankotuwa	77	70	
Total	768	181	
Total of Province	1,211	542	

For further details, Contact

Telephone : +94 37 2223479 (Ext – 215)

+94 37 2225582 Fax : +94 37 2225581

eMail : ccpnwp2014@gmail.com, info@healthdept.nw.gov.lk

Web : www.healthdept.nw.gov.lk



Note: There could be discrepancy in data due to practical reasons. Any errors will be corrected and shown in next issue.

Data Source: Regional directorates of health services Kurunegala & Puttlam.